

WOMEN YOU SHOULD KNOW

Learning Objectives: Students will:

1. use research skills to discover facts about notable women
2. use internet sources to find information
3. synthesize information to create a hat
4. create a timeline of hats

TEKS: SS 3.11A,B&C, 17A,B,C&E, 4.17A,B&D, 22 A,B&C, 5.5A&C, 24A,B&C
LA 3.25B, 26A&B, 4.23B, 24A&B, 5.23B, 24A

Materials Needed: online or print sources for research, biography, hat pattern,
web pattern

Vocabulary: notable, web, category, quotation

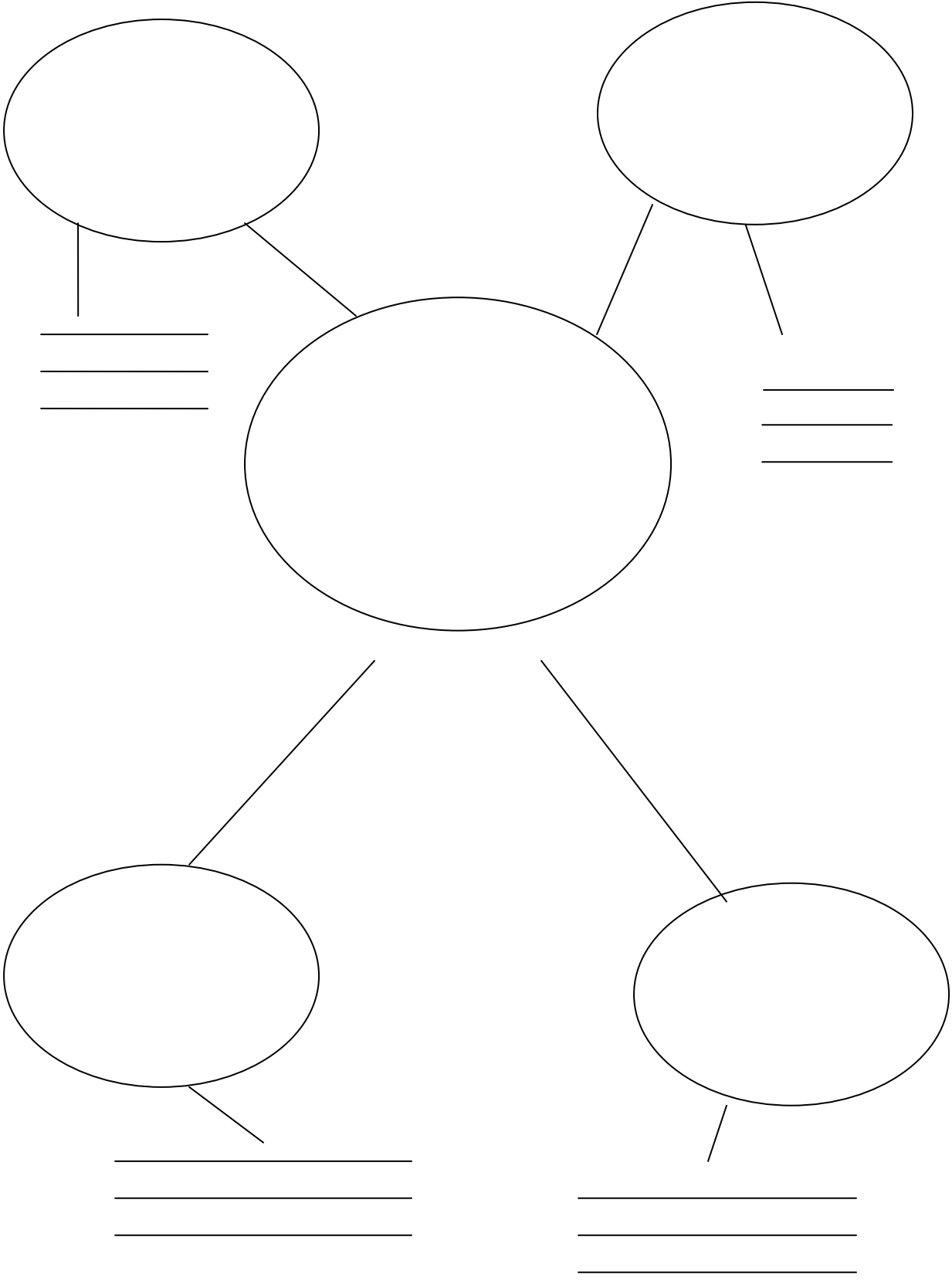
Teaching Strategy:

1. Ask students to define biography. What would you expect to find in a biography? Show examples of short biographies, such as David Adler's *Picture Book Biography* series.
2. Lead a class discussion about how categories, such as childhood, family, and education, can be used to organize and summarize information.
3. Show sample of web by displaying facts about your own history or the history of a famous person not being studied.
4. Assign notable women to find information about.
 - a. Anne Hutchinson
 - b. Jane Long
 - c. Susanna Dickinson
 - d. Harriet Tubman
 - e. Cynthia Ann Parker
 - f. Carrie Chapman Catt
 - g. Jane Addams
 - h. Ma Ferguson
 - i. Helen Keller
 - j. Lady Bird Johnson
 - k. Rosa Parks
 - l. Henrietta King
 - m. Barbara Jordan

- n. Laura Bush
5. Working with a partner, students will identify several categories of information to discover about the famous woman being studied. Categories should include:
 - a. Birth and childhood
 - b. Family
 - c. Education
 - d. Why she is famous
 - e. Quotation by or about her
 6. Students will create a web on which to record their information. These are easily created on unlined paper or found online. Allow students adequate time to find and record pertinent information. More information means a higher grade.
 7. Students will design a hat for the woman they studied, which will include some specific references to that woman. For example an educator's hat would include books, pencils, a ruler, etc. A nurse's hat would include a syringe, band-aids, a stethoscope.
 8. Each hat should reflect something about that woman, either her personality or an event(s) in her life. A mini-calendar could include a significant date, a word or phrase might be included in the hat band, an item might dangle from the brim.
 9. Several hat patterns are included in this lesson. Others are available online or students may choose to create their own.
 10. After all hats are created, students may report their findings while showing their hat, then place the hat along a timeline in chronological order. The quote by or about the famous woman should be placed on a sign under her hat as a way of identification.

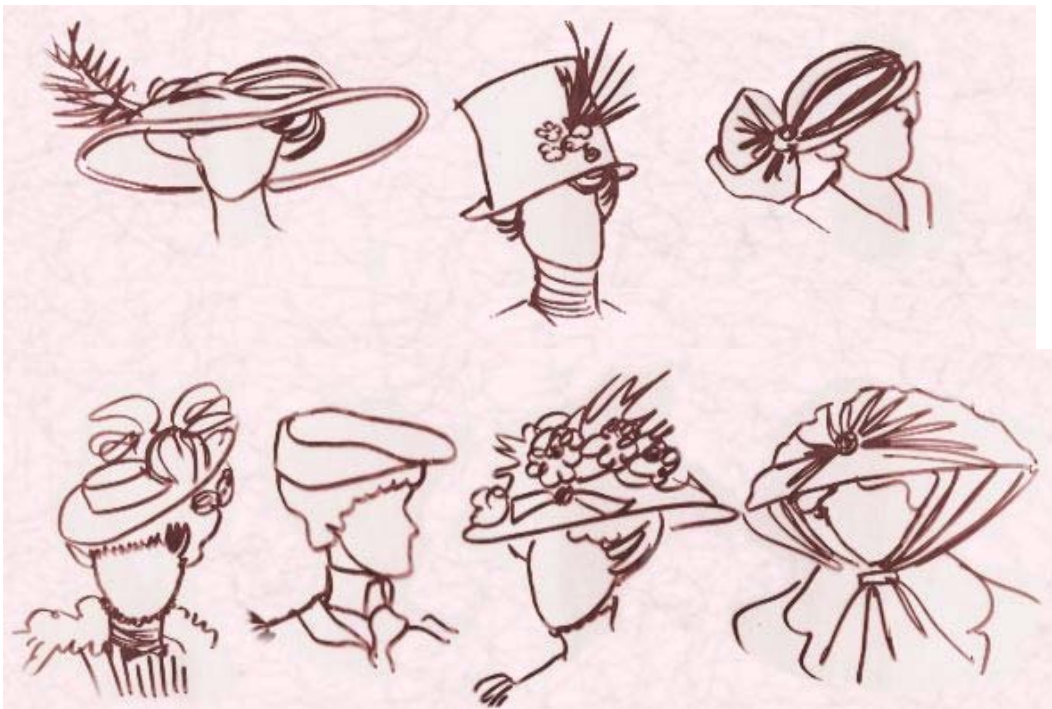
G/T Extension:

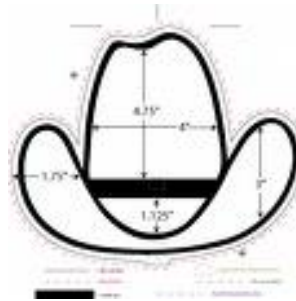
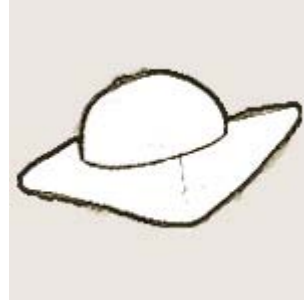
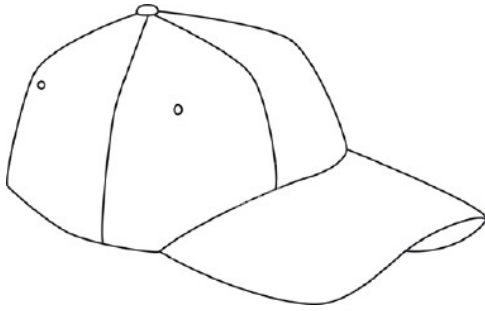
Students may analyze the quotes of each woman, putting them in their own words and reflecting on the significance of the quote.



EXAMPLES OF HATS TO USE AS PATTERNS

(Click on hat to enlarge to full size for use as a pattern)





Ladies Hat

