

THE GOODNIGHT LOVING TRAIL

Learning Objectives: Students will:

1. Explain the growth of the cattle industry and the importance of the Goodnight-Loving trail.
2. Use geographic skills to read and interpret maps
3. Use critical thinking skills to find and use information
4. Gather information from electronic sources

TEKS: SS 3.5A, 17A,C&E, 18 A&B, 4.4B, 6A, 7B, 8A&B, 21A,B&C, 22A&D
5.6A, 8B, 24A,B&C, 25A&B; LA 3.13A,B&C, Fig 19D&F, 4.11A,B&C, Fig
19D&F, 5.11A,B,C&E, Fig 19D&F

Materials: Internet access, Goodnight Loving Scavenger Hunt, map (attached)

Vocabulary: cattle drive, stampede

Teaching Strategies:

1. Display the page <http://www.oliverloving.com/> home page and ask students to read and discover how cattle first arrived in Texas.
2. On the second page, ask students to find how many cattle were in Texas when immigrants began arriving and the reason for early cattle drives.
3. Display the song, "Stampede", by Chris LeDoux , found on YouTube at http://www.youtube.com/watch?v=72ug3_V1H7Q
4. Discuss what causes a stampede and how it can be stopped/controlled on a cattle drive. Discuss other hazards of a cattle drive and what kind of person would want to work on a cattle drive.
5. Students will work with a partner on a Goodnight Loving Scavenger Hunt, in which they will discover important facts about the establishment of the Goodnight-Loving Trail and the cattle industry itself.
6. Give each pair of students the answer sheet for the Scavenger Hunt and direct them to the following websites to find their information:
 - a. <http://www.tshaonline.org/handbook/online/articles/fgo11>
 - b. http://www.pbs.org/weta/thewest/people/d_h/goodnight.htm
 - c. <http://www.oliverloving.com/>
 - d. <http://www.legendsofamerica.com/we-charlesgoodnight.html>
7. As students are reading and collecting information, assign them to find one other fact about the cattle industry, Charles Goodnight, or Oliver Loving to incorporate into a crossword puzzle at the end of the study.
8. Allow work time on the computer and reward the team that finishes first.
9. Locate the Chisholm Trail and the Goodnight-Loving Trail on the map provided or locate online.
10. Students will compare the trail map with a current Texas map to determine what cities those two trails went through.

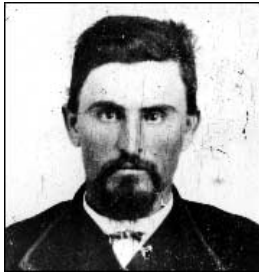
11. Gather the facts for the crossword puzzle and create a composite crossword using an online puzzle maker. Distribute to the class as a culminating and evaluation tool.

Extension for G/T: Students will make a poster, using graphics, text, and pictures of the facts about cattle drives and the Goodnight/Loving partnership. (to make a poster online, go to <http://edu.glogster.com/?>)

Jeanne Wray
LRE Consultant



Attachment 1 Courtesy of Texas Historical Commission



Goodnight Loving Scavenger Hunt

1. Cattle were first brought to Texas by the

2. The Dean of Texas Trail Drivers was

3. Oliver Loving drove the first herd of Texas Longhorns to a northern market in _____
4. The first cattle drive to Colorado was in _____
5. What happened to Charles Goodnight's first cattle drive in 1865?

6. How many cattle were in the first Goodnight-Loving cattle drive in 1866?

7. What was the biggest problem on this cattle drive?

8. How many miles per day could they drive the cattle?

9. Who bought many of the cattle at Fort Sumner, NM?

10. How old was Charles Goodnight when he came to Texas?

11. Charles Goodnight was the first cattle driver to use a _____ for cooking on the trail.

12. Charles Goodnight's ranch was located in the _____ Canyon.

13. The JA Ranch was started by Goodnight and _____.

14. By 1885 the JA Ranch had _____ acres and _____ cattle.

15. Goodnight and Adair raised _____ cattle.